

Recombinant Nipah virus (Bangladesh) glycoprotein G Protein, Tag Free

Cat. No. glycoprotein G-32N Lot. No. (See product label)

SPECIFICATION

| | |
|-------------------------|---|
| Product Overview | Henipavirus nipahense (Bangladesh) glycoprotein G produced in HEK293 cells and purified from culture supernatant. A C-terminal purification handle was cleaved using TEV protease, and both protease and tag were removed during the purification process. |
| Species | Nipah virus |
| Source | HEK293 |
| ProteinLength | 71-602aa |
| Description | <p>Nipah virus (NiV) is an enveloped, single-stranded, negative-sense RNA virus that belongs to the Henipavirus genus, a member of the Paramyxoviridae family. The first recognized outbreak of NiV occurred in Malaysia in 1998/1999, affecting both pigs and humans. Later outbreaks in Bangladesh and India were primarily linked to consuming fruits or fruit products contaminated with the urine or saliva of infected fruit bats. Human-to-human transmission was reported in both regions, particularly among family members and caregivers of infected patients. The symptoms of Nipah virus infection in humans can include rapidly developing fever, abdominal pain, nausea, vomiting, acute respiratory syndrome, and severe encephalitis, which is fatal in a high percentage of cases. Diagnosis of Nipah virus infection can be challenging due to its non-specific early symptoms. However, early detection is critical to improve the chance of survival, prevent transmission, and contain an outbreak. The Henipavirus</p> |

 Tel: 1-631-559-9269 1-516-512-3133

 Email: info@creative-biomart.com  Fax: 1-631-938-8127

 45-1 Ramsey Road, Shirley, NY 11967, USA

nipahense glycoprotein G (NiV-G) is a crucial component in the infection process of the Nipah virus. This protein facilitates the attachment of the virus to host cells. NiV-G, along with the fusion (F) glycoprotein, mediates membrane fusion, allowing the virus to enter the host cell.

| | |
|------------|-----|
| Tag | Non |
|------------|-----|

| | |
|-------------|--------|
| Form | Liquid |
|-------------|--------|

| | |
|-----------------------|--------|
| Molecular Mass | 61 kDa |
|-----------------------|--------|

| | |
|----------------|--|
| Storage | Short Term Storage: -80 centigrade Long Term Storage: -80 centigrade Can be frozen, but avoid multiple freeze-thaw cycles. |
|----------------|--|

| | |
|-----------------------|-------------|
| Storage Buffer | DPBS buffer |
|-----------------------|-------------|

| | |
|----------------------|------------|
| Concentration | 0.63 mg/mL |
|----------------------|------------|

GENE INFORMATION

| | |
|------------------------|---|
| Official Symbol | G |
|------------------------|---|

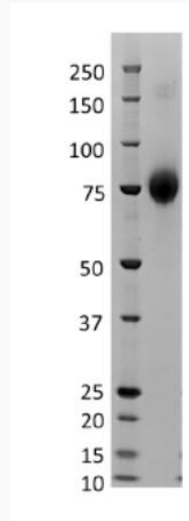
| | |
|-----------------|-------------------|
| Synonyms | G; glycoprotein G |
|-----------------|-------------------|

 Tel: 1-631-559-9269 1-516-512-3133

 Email: info@creative-biomart.com  Fax: 1-631-938-8127

 45-1 Ramsey Road, Shirley, NY 11967, USA

WB



 Tel: 1-631-559-9269 1-516-512-3133

 Email: info@creative-biomart.com  Fax: 1-631-938-8127

 45-1 Ramsey Road, Shirley, NY 11967, USA